

A Project by



VISHNU PRIYA GROUP

One of Bangalore's respected residential developers, Vishnu Priya Group has a prestigious track record. Vishnu Priya Group is a dedicated team of accomplished real estate professionals known for a free thinking and imaginative approach, spanning the entire spectrum of design and building, from conversions to new construction. Vishnu Priya Group sets itself apart in the industry with its unique ability to target development opportunities in prime locations with accomplished results.

Architecture Design - Aslam Architects & Interior Designers Pvt Ltd.

Structure Design - ACME Consultants Inc.

Marketing Office:

Suite 7 & 8, 4th Floor, Gamma Building, Sigma Soft Tech Park,
Whitefield Main Road, Bangalore - 560066.

Call: 99000 55933, 99000 65395

www.parimalaskyview.com

Parimala
SKYVIEW
Hopefarm Junction, Whitefield.



Live beyond luxury



Parimala **SKYVIEW**

Parimala Skyview introduces 2 to 3 bedroom residences to Hopefarm Junction in Whitefield, one of Bangalore's most sort out housing destinations. Designed by award-winning architects, Parimala Skyview offers 94 unique homes, with private outdoor spaces, a residents' landscaped garden, and a range of services and amenities.

Parimala Skyview's design reinterprets the heritage of Urban architecture, integrating classic and traditional elements with a modern sensibility. With an elegant facade complemented by large balconies, Parimala Skyview takes advantage of its premium location to create a distinctive yet contextual mark on the Hopefarm Junction, Whitefield.

Located between the heart of Whitefield and the ITPL, Bangalore's IT hub, and in proximity to an exceptional array of boutiques, restaurants, schools and malls; coupled with its exquisite architecture, epitomizes classic contemporary Urban living.

Striking entryway is recessed from the streetscape, providing a welcoming and private homecoming.





Entrance

Striking entryway provides a welcoming and private homecoming experience. The promise of unparalleled security makes life at Parimala Skyview safe, secure and peaceful with 24hr electronic and manned security.

Lobby & Podium

with reception desk, and concierge service. Parimala Skyview's double-height entry draws the exterior's masonry, while revealing views to the landscaped private garden.



Rooftop Swimming Pool "Open to Sky"

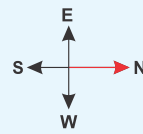




Club BluSky

Roof-top Infinity Swimming Pool

With a pergola to provide shade and privacy, the terrace is a respite from the city rush and a place to read the paper or just get away from it all. The terrace will have seating as well as changing rooms with locker facility. The infinity swimming pool is a perfect spot for both relaxing and entertaining.



Recreation Center (10th Floor)

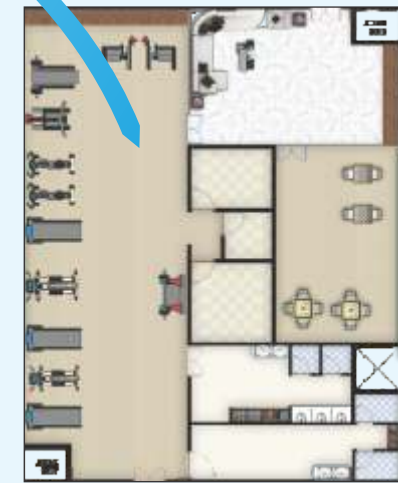
Party anytime!
Enjoy the multi-purpose room to celebrate each and every moments of your life with your friends and relatives.

Play anytime!
Indoor games for all ages that includes Ping pong, Pool table, Air hockey and more..

Fitness Center (11th Floor)

The fitness center is outfitted with state of the art equipment allowing owners to exercise in the comfort of their own home.

A group exercise space is available to reserve for personal training, yoga and Pilates sessions.



Floorplans

Designed with modern residential needs in mind, Parimala Skyview combines the generous layouts of vastu-complaint planning, including foyers, bedroom corridors, with contemporary convenience, creating an open and inviting atmosphere. Select units have private outdoor terraces.



Technical Specification

FLOORING - COMMON AREA

Waiting lounge / reception: Imported marble flooring

Staircase: Granite / Vitrified tiles

Lift lobby & Corridors: Vitrified tiles

FLOORING - APARTMENT UNIT

Living / Dining / Family / Foyer: Vitrified Tiles

Bedrooms: Laminate wooden flooring

Balcony / Deck: Matt finished ceramic tiles

Kitchen: Vitrified Tiles

Bathrooms: Designer / ceramic tiles

KITCHEN

Provision for modular kitchen

BATHROOMS

CP fittings: Roca/Kholer or equivalent

Sanitary Fittings: Roca/Kholer or equivalent

DOORS & WINDOWS

Main door: Teakwood frame with designer shutter

Bedroom & Bathroom doors: Pre-engineered frames & shutters

Balcony door: UPVC / Aluminium with 2 track with bug screen

Windows: UPVC / Anodised aluminium with glazing with optional safety grills.

PAINTING AND FINISHES

External: High quality weather proof ultima paint.

Internal walls & Ceilings: Acrylic emulsion paint

POWER SUPPLY

2-bedroom apartments – 4 KVA

3-bedroom apartments – 6 KVA

Electrical switches:

Havells or equivalent

DG BACKUP

2-bedroom apartments – 2 KVA

3-bedroom apartments – 3 KVA

AIR CONDITIONING

Provision for split air-conditioning

SECURITY

Provision for home automation

Amenities

24/7 manned & electronic security

Double height lobby & Reception area

Water softener plant

Rain water harvesting system

Sewage treatment plant

3 Level covered car parking

Visitors parking

Driver / Servant cabin

Senior citizen corner

Children Play Area

Landscaping

Jogging track

Recreation center (10th Floor)

Fitness center (11th Floor)

Roof top infinity swim (12th Floor)

This brochure is only conceptual presentation and not a legal offering. The promoters reserve the rights to make changes in elevation, highlights, plans, areas and specifications as may be recommended by architect or approving authorities.

Location

Nestled in vibrant Whitefield, Parimala Skyview has great connectivity to the rest of Bangalore. Whitefield's IT parks, schools, hospitals and heritage make it one of the most enticing and coveted parts of the Bangalore city, you are never far from beautiful inner-circle parks and green spaces with International Tech Park a stone's throw from your door, Parimala Skyview is ideal place to own a flat.

Near by Landmarks

Schools

- Deens Academy
- Whitefield Global
- Delhi Public
- VIBGYOR
- Green Wood High
- TISB School
- Oakridge International

Hospitals

- Columbia Asia
- Sathya Sai
- Vydehi
- Sakra
- Narayana Hrudayala
- Yashomathi
- Sankara Eye

IT Parks

- ITPL
- GR Tech
- Sigma Tech
- Kalyani Tech
- SJR I Park
- Brigade Tech
- Prestige Tech

Malls

- Phoenix Market City
- Forum Value Mall
- Virginia Mall
- Inorbit
- SouleSpace Arena
- Ascendas Park Square
- VR Bangalore

